

# 47-FOOT MOTOR LIFEBOAT

## MLB SPECIFICATIONS

### Hull

Type ..... Monohull  
Length ..... 47 feet, 11 inches  
Beam ..... 14 feet  
Draft ..... 4 feet, 6 inches  
Construction ..... Marine grade aluminum  
Displacement ..... Approximately 40,000 lb

### Payload

Towing Capacity ..... 100 tons  
Crew/Passengers ..... Total 9 (4 crew, 5 passengers)

### Power

Engines ..... Two 435 hp Detroit Diesel engines  
Fuel Capacity ..... 400 gallons

### Performance

Speed ..... 25 knots (max. speed); 22 knots (cruise)  
Range ..... 200 nautical miles (cruise)  
Maximum Wind ..... 60 knots  
Breaking Surf ..... 20 feet  
Self-Righting Capability ..... Rollover in under 10 seconds

### Electronic Equipment List

Communications ..... Raytheon RAY 152 HF-SSB Radio  
Raytheon RAY 430 Loudhailer  
Simrad TD-L1550 VHF-FM Direction Finder  
Motorola Spectra 9000 VHF50W Radio System  
Navigation Systems ..... Raytheon RAYCHART 620 Electronic Chart System  
Raytheon NAV 398 GPS/LORAN System  
Raytheon Autohelm ST 50 PLUS Depth Indicator  
Raytheon Autohelm ST 30 Heading Indicator  
Raytheon R41X AN/SPS-69 Radar System  
Control and Alarm ..... Raytheon RAYPILOT 650 Autopilot Course Computer

**Textron Marine & Land** //  
TEXTRON Systems

19401 Chef Menteur Hwy.  
New Orleans, LA 70129 USA  
Phone: 504-245-6600  
Fax: 504-254-8000

[www.textronsystems.com](http://www.textronsystems.com)



MLB  
47-FOOT MOTOR LIFEBOAT



**Textron Marine & Land** //  
TEXTRON Systems

# MLB - 47' MOTOR LIFEBOAT

EXCELLENT STABILITY, STRENGTH AND SURVIVABILITY

## Superior performance

### OPERATIONALLY PROVEN AND IN FULL PRODUCTION

Textron Marine & Land's (TM&L) 47-foot Motor Lifeboat (MLB) is a rugged, highly survivable all-aluminum rescue boat that significantly enhances the United States Coast Guard's (USCG) ability to perform search and rescue operations in heavy weather conditions.

### PRODUCTION HISTORY

Under a competitively bid contract, the USCG awarded the prototype construction contract for the 47-foot MLB to Textron Marine & Land in 1988. TM&L then built five pre-production boats, after the Coast Guard exercised an option to the initial contract. In 1995, following an extensive battery of field tests and a new competition, TM&L was awarded the initial contract for manufacture of the first 20 MLBs. In subsequent years, the company was awarded options to manufacture a total quantity of 117 craft. During the full production cycle, one new MLB entered the USCG fleet every 12 working days.

### SUPERIOR SEAKEEPING

The 47-foot MLB design combines many technological innovations. Its lightweight, rugged marine grade aluminum hull can withstand impacts from 20-foot breaking waves at three times the force of gravity. Twice as fast as its 44-foot predecessor, the new 47-foot MLB can transit in

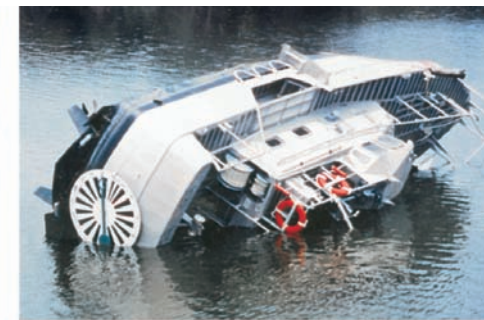
excess of 25 knots, providing a significant improvement in response time during life threatening situations. The MLB design has an inherent self-righting capability. When pitch-poled or rolled into swells, MLB will self-right in less than 10 seconds – with all machinery remaining fully operational.

### MAXIMUM CREW EFFICIENCY

The MLB operates with a crew of four and accommodates up to five passengers. For maximum safety, visibility and efficiency, the boat's four operator's stations can be controlled from port or starboard from either an open bridge position or from inside the enclosed bridge. The open bridge allows for superior visibility to negotiate obstacles and to enhance safety during close recovery of persons in the water. The enclosed bridge aids operator performance by providing a protected, climate-controlled watertight compartment for use during transit and allows the operator and crew to remain protected from fatigue caused by inclement weather. The enclosed watertight survivor's compartment is also climate-controlled and offers critical temperature adjustments and an environment for medical aid for survivors who may have been injured or submerged in icy waters.

### ERGONOMICS

To mitigate impacts from shock caused by extreme marine conditions, the MLB features 360-degree rotatable shock absorbing operator seats outfitted with lap belts, lumbar support and arm rests. The user-friendly electronics are within easy reach of the operator and navigator, and can accommodate 5<sup>th</sup> percentile female/95<sup>th</sup> percentile male. The fly-by-wire navigation and control systems offer exceptionally responsive maneuvering. The enclosed bridge is easily accessible from the open bridge, aft deck or engine room. Large windows permit maximum



MLB is designed to self-right in under 10 seconds, with all machinery remaining operational.

line-of-sight vision and are outfitted with heaters, defrosters and wiper/washers. A potable water supply, cooler, sink, and hot cup are provided in the survivor's compartment. Forward, there is an enclosed head. The survivor's compartment and attendant seating is situated at the combined center of rotation of the vessel, providing maximum passenger safety and comfort during rough sea operations.

### LIFESAVING FEATURES

Through innovative engineering and design, the MLB offers recessed recovery wells on both port and starboard sides. Because these recovery wells allow rescuers to operate less than one foot from the waterline, retrieval of victims or flotsam is more easily accomplished. Special safety fittings mounted at optimum intervals around the hull of the boat allow rescuers to remain safely harnessed to the boat during pitching and rolling seas. The survivor's compartment, designed for attendance to injured persons, also makes use of harnesses to promote passenger safety.

### THE MLB SOLUTION

Increasingly, modern navies, marine police agencies, coast guards, firefighters and civil patrols require rugged vessels that can operate effectively in multi-mission roles. Because MLB is capable in 60-knot wind conditions and 20-foot surf, the operating window for missions is much larger than in years past. Textron Marine & Land's MLB is a proven multipurpose platform that offers unparalleled survivability.

### MLB GROWTH OPPORTUNITIES

Based on the extreme and proven success of this platform, many international customers have expressed interest in the MLB for achieving their specific mission scenarios.

To answer those requirements, TM&L has further developed the MLB to address a variety of missions including search and rescue, patrol, firefighting and other law enforcement and paramilitary activities. In addition, we now offer a 52-foot model that encompasses the same design attributes and abilities as the 47-footer, but with added amenities that allow for extended range and higher speeds. In all, there are over 36 variations from which to choose, offering a range of power, propulsion, capabilities and options.

